





RECESSED SPOTLIGHT

Recessed Spotlight



AD-YS-T705

Voltage	110-265V
Color Temperature (K)	3000K/4000K/6000K
CRI	80
Beam angle	20°
Fixture Material	Aluminum+Acrylic
Fixture Color/Finish	White
IP code	20
Average Lifetime	15000-Hours
Installation Mode	Recessed Mounting
Customizable Certificate	\
Warranty	2 Year Limited (residential), 1 Year Limited (commercial)

Model	Size(mm)	Cut Out(mm)	Power	Luminous Flux
AD-YS-T705-7W	Φ85*H45	Φ75	7W	560LM
D-YS-T705-12W	Φ115*H50	Φ120	12W	960LM
AD-YS-T705-20W	Φ135*H55	Φ120	20W	1600LM



AD-TT85-T07

Voltage	110-265V
Color Temperature (K)	3000K/4000K/6000K
CRI	80
Beam angle	24°
Fixture Material	Aluminum+Acrylic
Fixture Color/Finish	White
IP code	20
Average Lifetime	15000-Hours
Installation Mode	Recessed Mounting
Customizable Certificate	\
Warranty	2 Year Limited (residential), 1 Year Limited (commercial)

Model	Size(mm)	Cut Out(mm)	Power	Luminous Flux
AD-TT85-T07-7W	Φ85*H45	Φ75	7W	560LM
AD-TT85-T07-12W	Φ105*H50	Φ95	12W	960LM
AD-TT85-T07-20W	Φ160*H60	Φ145	20W	1600LM



AD-V701

Voltage	110-265V
Color Temperature (K)	3000K/4000K/6000K
CRI	80
Beam angle	24°
Fixture Material	Aluminum+Acrylic
Fixture Color/Finish	White
IP code	20
Average Lifetime	20000-Hours
Installation Mode	Recessed Mounting
Customizable Certificate	CE/SAA/UL
Warranty	3 Year Limited (residential), 1 Year Limited (commercial)

Model	Size(mm)	Cut Out(mm)	Power	Luminous Flux
AD-V701-7W	Φ85*H45	Φ75	7W	560LM
AD-V701-12W	Φ105*H58	Φ95	12W	960LM
AD-V701-20W	Φ138*H68	Φ120	20W	1600LM
AD-V701-30W	Φ160*H70	Φ140	30W	2400LM



D-XA801

Voltage	110-265V
Color Temperature (K)	3000K/4000K/6000K
CRI	80
Beam angle	24°
Fixture Material	Aluminum+Acrylic
Fixture Color/Finish	White
IP code	20
Average Lifetime	20000-Hours
Installation Mode	Recessed Mounting
Customizable Certificate	CE/SAA/UL
Warranty	3 Year Limited (residential), 1 Year Limited (commercial)

Model	Size(mm)	Cut Out(mm)	Power	Luminous Flux
AD-XA801-S7W	Φ63*H63	Φ55	7W	560LM
AD-XA801-L7W	Φ85*H76	Φ75	7W	560LM
AD-XA801-S12W	Φ85*H76	Φ75	12W	960LM
AD-XA801-L12W	Φ105*H99	Φ95	12W	960LM
AD-XA801-S20W	Φ105*H99	Φ95	20W	1600LM
AD-XA801-L20W	Φ130*H115	Φ120	20W	1600LM
AD-XA801-30W	Φ130*H115	Φ120	30W	2400LM

Recessed Spotlight



BLD-6562

Voltage	110-265V
Color Temperature (K)	3000K/4000K/6000K
CRI	90
Beam angle	24°
Fixture Material	Aluminum+Acrylic
Fixture Color/Finish	White/Black
IP code	20
Average Lifetime	30000-Hours
Installation Mode	Recessed Mounting
Customizable Certificate	CE/SAA/UL
Warranty	5 Year Limited (residential), 1 Year Limited (commercial)

Model	Size(mm)	Cut Out(mm)	Power	Luminous Flux
BLD-6562S-5W	Φ82*H59	Φ65	5W	500LM
BLD-6562-7W	Φ85*H84	Φ70	7W	700LM
BLD-6562-12W	Φ85*H84	Φ75	12W	1200LM
BLD-6562-20W	Φ138*H115	Φ115	20W	2000LM
BLD-6562-30W	Φ138*H125	Φ115	30W	3000LM



BLD-701

Voltage	110-265V
Color Temperature (K)	3000K/4000K/6000K
CRI	90
Beam angle	24°
Fixture Material	Aluminum+Acrylic
Fixture Color/Finish	White/Black
IP code	20
Average Lifetime	30000-Hours
Installation Mode	Recessed Mounting
Customizable Certificate	CE/SAA/UL
Warranty	5 Year Limited (residential), 1 Year Limited (commercial)

Model	Size(mm)	Cut Out(mm)	Power	Luminous Flux
BLD-701-5W	Φ98*H45	Φ70	5W	500LM
BLD-701-9W	Φ122*H48	Φ90	9W	900LM
BLD-701-12W	Φ148*H52	Φ120	12W	1200LM

Recessed Spotlight



BLD-801

Voltage	110-265V
Color Temperature (K)	3000K/4000K/6000K
CRI	90
Beam angle	24°
Fixture Material	Aluminum+Acrylic
Fixture Color/Finish	White/Black
IP code	20
Average Lifetime	30000-Hours
Installation Mode	Recessed Mounting
Customizable Certificate	CE/SAA/UL
Warranty	5 Year Limited (residential), 1 Year Limited (commercial)

Model	Size(mm)	Cut Out(mm)	Power	Luminous Flux
BLD-801S-5W	Φ68*H65	Φ55	5W	500LM
BLD-801-7W	Φ88*H68	Φ75	7W	700LM
BLD-801-12W	Φ88*H78	Φ75	12W	1200LM
BLD-801-20W	Φ108*H102	Φ95	20W	2000LM
BLD-801-30W	131*H120	Φ120	30W	3000LM



BLD-6415

Voltage	110-265V
Color Temperature (K)	3000K/4000K/6000K
CRI	90
Beam angle	24°
Fixture Material	Aluminum+Acrylic
Fixture Color/Finish	White/Black
IP code	20
Average Lifetime	30000-Hours
Installation Mode	Recessed Mounting
Customizable Certificate	CE/SAA/UL
Warranty	5 Year Limited (residential), 1 Year Limited (commercial)

Model	Size(mm)	Cut Out(mm)	Power	Luminous Flux
BLD-6415S-5W	Φ65*H60	Φ55	5W	500LM
BLD-6415-7W	Φ85*H70	Φ75	7W	700LM
BLD-6415-12W	Φ85*H70	Φ92	12W	1200LM
BLD-6415-20W	Φ105*H100	Φ115	20W	2000LM
BLD-6415-30W	Φ130*H120	Φ115	30W	3000LM

Recessed Spotlight



BLD-8054

Voltage	110-265V
Color Temperature (K)	3000K/4000K/6000K
CRI	90
Beam angle	24°
Fixture Material	Aluminum+Acrylic
Fixture Color/Finish	White/Black
IP code	20
Average Lifetime	30000-Hours
Installation Mode	Recessed Mounting
Customizable Certificate	CE/SAA/UL
Warranty	5 Year Limited (residential), 1 Year Limited (commercial)



BLD-8416

Voltage	110-265V
Color Temperature (K)	3000K/4000K/6000K
CRI	90
Beam angle	24°
Fixture Material	Aluminum+Acrylic
Fixture Color/Finish	White/Black
IP code	20
Average Lifetime	30000-Hours
Installation Mode	Recessed Mounting
Customizable Certificate	CE/SAA/UL
Warranty	5 Year Limited (residential), 1 Year Limited (commercial)

Model	Size(mm)	Cut Out(mm)	Power	Luminous Flux
BLD-8054S-5W	Φ68*H58	Φ55	5W	500LM
BLD-8054-7W	Φ85*H90	Φ75	7W	700LM
BLD-8054-12W	Φ85*H90	Φ75	12W	1200LM
BLD-8054-20W	Φ105*H105	Φ95	20W	2000LM

Model	Size(mm)	Cut Out(mm)	Power	Luminous Flux
BLD-8416-3W	Φ40*H55	Φ35	3W	300LM
BLD-8416-5W	Φ60*H80	Φ50	5W	500LM

Recessed Spotlight



BLD-6694

Voltage	110-265V
Color Temperature (K)	3000K/4000K/6000K
CRI	90
Beam angle	24°
Fixture Material	Aluminum+Acrylic
Fixture Color/Finish	White/Black
IP code	20
Average Lifetime	30000-Hours
Installation Mode	Recessed Mounting
Customizable Certificate	CE/SAA/UL
Warranty	5 Year Limited (residential), 1 Year Limited (commercial)

Model	Size(mm)	Cut Out(mm)	Power	Luminous Flux
BLD-6694-3W	Φ45*H50	Φ40	3W	300LM
BLD-6694S-3W	Φ37*H40	Φ30	3W	300LM
BLD-6694-5W	Φ57*H62	Φ50	5W	500LM
BLD-6694B-5W	Φ68*H78	Φ60	5W	500LM



Recessed Spotlight



BLD-501

Voltage	110-265V
Color Temperature (K)	3000K/4000K/6000K
CRI	90
Beam angle	24°
Fixture Material	Aluminum+Acrylic
Fixture Color/Finish	White/Black
IP code	20
Average Lifetime	30000-Hours
Installation Mode	Recessed Mounting
Customizable Certificate	CE/SAA/UL
Warranty	5 Year Limited (residential), 1 Year Limited (commercial)

Model	Size(mm)	Cut Out(mm)	Power	Luminous Flux
BLD-501-5W	L92*W92*H46	L80*W80	5W	500LM
BLD-501-7W	L120*W120*H58	L100*W100	7W	700LM
BLD-501-12W	L140*W140*H76	L120*W120	12W	1200LM



BLD-501-2

Voltage	110-265V
Color Temperature (K)	3000K/4000K/6000K
CRI	90
Beam angle	24°
Fixture Material	Aluminum+Acrylic
Fixture Color/Finish	White/Black
IP code	20
Average Lifetime	30000-Hours
Installation Mode	Recessed Mounting
Customizable Certificate	CE/SAA/UL
Warranty	5 Year Limited (residential), 1 Year Limited (commercial)

Model	Size(mm)	Cut Out(mm)	Power	Luminous Flux
BLD-501-2-5W	L175*W92*H46	L160*W80	5W*2	1000LM
BLD-501-2-7W	L230*W120*H58	L200*W100	7W*2	1400LM
BLD-501-2-12W	L270*W140*H76	L240*W120	12W*2	2400LM

Recessed Spotlight



BLD-802

Voltage	110-265V
Color Temperature (K)	3000K/4000K/6000K
CRI	90
Beam angle	24°
Fixture Material	Aluminum+Acrylic
Fixture Color/Finish	White/Black
IP code	20
Average Lifetime	30000-Hours
Installation Mode	Recessed Mounting
Customizable Certificate	CE/SAA/UL
Warranty	5 Year Limited (residential), 1 Year Limited (commercial)

Model	Size(mm)	Cut Out(mm)	Power	Luminous Flux
BLD-802-7W	L88*W88*H68	L75*W78	7W	700LM
BLD-802-12W	L88*W88*H68	L75*W78	12W	1200LM
BLD-802-15W	L115*W115*H102	L95*W95	15W	1500LM



BLD-802-2

Voltage	110-265V
Color Temperature (K)	3000K/4000K/6000K
CRI	90
Beam angle	24°
Fixture Material	Aluminum+Acrylic
Fixture Color/Finish	White/Black
IP code	20
Average Lifetime	30000-Hours
Installation Mode	Recessed Mounting
Customizable Certificate	CE/SAA/UL
Warranty	5 Year Limited (residential), 1 Year Limited (commercial)

Model	Size(mm)	Cut Out(mm)	Power	Luminous Flux
BLD-802-2-7W	L168*W88*H68	L160*W75	7W*2	1400LM
BLD-802-2-12W	L168*W88*H78	L160*W75	12W*2	2400LM
BLD-802-2-15W	L216*W115*H102	L195*W95	15W*2	3000LM

Recessed Spotlight



BLD-9771

Voltage	110-265V
Color Temperature (K)	3000K/4000K/6000K
CRI	90
Beam angle	24°
Fixture Material	Aluminum+Acrylic
Fixture Color/Finish	White/Black
IP code	20
Average Lifetime	30000-Hours
Installation Mode	Recessed Mounting
Customizable Certificate	CE/SAA/UL
Warranty	5 Year Limited (residential), 1 Year Limited (commercial)



BLD-501-2

Voltage	110-265V
Color Temperature (K)	3000K/4000K/6000K
CRI	90
Beam angle	24°
Fixture Material	Aluminum+Acrylic
Fixture Color/Finish	White/Black
IP code	20
Average Lifetime	30000-Hours
Installation Mode	Recessed Mounting
Customizable Certificate	CE/SAA/UL
Warranty	5 Year Limited (residential), 1 Year Limited (commercial)

Model	Size(mm)	Cut Out(mm)	Power	Luminous Flux
BLD-9771-7W	L65*W65*H53	L55*W55	7W	500LM
BLD-9771-10W	L85*W85*H62	L75*W75	10W	1000LM
BLD-9771-15W	L105*W105*H77	L95*W95	15W	1500LM

Model	Size(mm)	Cut Out(mm)	Power	Luminous Flux
BLD-9771-2-7W	L126*W65*H53	L155*W55	7W*2	1400LM
BLD-9771-2-10W	D167*W85*H62	L160*W75	10W*2	2000LM
BLD-9771-2-15W	L208*W105*H77	L195*W95	15W*2	3000LM



RECESSED DOWNLIGHT

Recessed downlight



AD-YS-T703

Voltage	110-265V
Color Temperature (K)	3000K/4000K/6000K
CRI	80
Beam angle	120°
Fixture Material	Iron+Acrylic
Fixture Color/Finish	White
IP code	20
Average Lifetime	15000-Hours
Installation Mode	Recessed Mounting
Customizable Certificate	\
Warranty	2 Year Limited (residential), 1 Year Limited (commercial)

Model	Size(mm)	Cut Out(mm)	Power	Luminous Flux
AD-YS-T703-5W	Φ100*H35	Φ75	5W	400LM
AD-YS-T703-7W	Φ120*H35	Φ95	7W	560LM
AD-YS-T703-12W	Φ145*H40	Φ120	12W	960LM
AD-YS-T703-15W	Φ180*H45	Φ140	15W	1200LM



AD-YS-T704

Voltage	110-265V
Color Temperature (K)	3000K/4000K/6000K
CRI	80
Beam angle	120°
Fixture Material	Aluminum+Acrylic
Fixture Color/Finish	White
IP code	20
Average Lifetime	15000-Hours
Installation Mode	Recessed Mounting
Customizable Certificate	\
Warranty	2 Year Limited (residential), 1 Year Limited (commercial)

Model	Size(mm)	Cut Out(mm)	Power	Luminous Flux
AD-YS-T704-5W	Φ100*H35	Φ75	5W	400LM
AD-YS-T704-9W	Φ120*H35	Φ95	9W	720LM
AD-YS-T704-12W	Φ145*H40	Φ120	12W	960LM
AD-YS-T704-18W	Φ180*H45	Φ140	18W	1440LM

Recessed downlight



AD-YS-T504-5W

Voltage	110-265V
Color Temperature (K)	3000K+6000K
CRI	80
Beam angle	120°
Fixture Material	Iron+Acrylic
Fixture Color/Finish	White/Gold/Black/Silver
IP code	20
Average Lifetime	15000-Hours
Installation Mode	Recessed Mounting
Customizable Certificate	\
Warranty	2 Year Limited (residential), 1 Year Limited (commercial)

Model	Size(mm)	Cut Out(mm)	Power	Luminous Flux
AD-YS-T703-5W	Φ100*H45	Φ75	5W	400LM



AD-TT85D-T07

Voltage	110-265V
Color Temperature (K)	3000K/4000K/6000K
CRI	80
Beam angle	24°
Fixture Material	Aluminum+Acrylic
Fixture Color/Finish	White
IP code	20
Average Lifetime	15000-Hours
Installation Mode	Recessed Mounting
Customizable Certificate	\
Warranty	2 Year Limited (residential), 1 Year Limited (commercial)

Model	Size(mm)	Cut Out(mm)	Power	Luminous Flux
AD-TT85D-T07-7W	Φ85*H45	Φ75	7W	560LM
AD-TT85D-T07-12W	Φ105*H50	Φ95	12W	960LM
AD-TT85D-T07-20W	Φ160*H60	Φ145	20W	1600LM

Recessed downlight



BLD-701MS

Voltage	110-265V
Color Temperature (K)	3000K/4000K/6000K
CRI	80
Beam angle	120°
Fixture Material	Aluminum+Acrylic
Fixture Color/Finish	White/Black
IP code	20
Average Lifetime	30000-Hours
Installation Mode	Recessed Mounting
Customizable Certificate	CE/SAA/UL
Warranty	5 Year Limited (residential), 1 Year Limited (commercial)

Model	Size(mm)	Cut Out(mm)	Power	Luminous Flux
BLD-701MS-5W	Φ98*H45	Φ70	5W	500LM
BLD-701MS-9W	Φ122*H48	Φ90	7W	900LM
BLD-701MS-12W	Φ148*H52	Φ120	12W	1200LM



BLD-7280

Voltage	110-265V
Color Temperature (K)	3000K/4000K/6000K
CRI	90
Beam angle	120°
Fixture Material	Aluminum+Acrylic
Fixture Color/Finish	White/Black
IP code	20
Average Lifetime	30000-Hours
Installation Mode	Recessed Mounting
Customizable Certificate	CE/SAA/UL
Warranty	5 Year Limited (residential), 1 Year Limited (commercial)

Model	Size(mm)	Cut Out(mm)	Power	Luminous Flux
BLD-7280-7W	Φ100*H30	Φ75	5W	700LM
BLD-7280-12W	Φ120*H35	Φ90	12W	1200LM
BLD-7280-20W	Φ185*H35	Φ155	20W	2000LM
BLD-7280-30W	Φ230*H40	Φ190	30W	3000LM

Recessed downlight



BLD-802

Voltage	110-265V
Color Temperature (K)	3000K/4000K/6000K
CRI	90
Beam angle	120°
Fixture Material	Aluminum+Acrylic
Fixture Color/Finish	White/Black
IP code	20
Average Lifetime	30000-Hours
Installation Mode	Recessed Mounting
Customizable Certificate	CE/SAA/UL
Warranty	5 Year Limited (residential), 1 Year Limited (commercial)



BLD-8511

Voltage	110-265V
Color Temperature (K)	3000K/4000K/6000K
CRI	90
Beam angle	55°
Fixture Material	Aluminum+Acrylic
Fixture Color/Finish	White/Black
IP code	20
Average Lifetime	30000-Hours
Installation Mode	Recessed Mounting
Customizable Certificate	CE/SAA/UL
Warranty	5 Year Limited (residential), 1 Year Limited (commercial)

Model	Size(mm)	Cut Out(mm)	Power	Luminous Flux
BLD-802R-5W	Φ63*H33	Φ55	5W	500LM
BLD-802R-7W	Φ85*H44	Φ75	7W	700LM
BLD-802R-12W	Φ95*H54	Φ85	12W	1200LM
BLD-802R-15W	Φ105*H64	Φ95	15W	1500LM
BLD-802R-20W	Φ130*H68	Φ115	20W	2000LM
BLD-802R-30W	Φ170*H75	Φ155	30W	3000LM

Model	Size(mm)	Cut Out(mm)	Power	Luminous Flux
BLD-8511-5W	Φ90*H45	Φ70	5W	500LM
BLD-8511-7W	Φ90*H45	Φ70	7W	700LM
BLD-8511-10W	Φ105*H65	Φ85	10W	1000LM
BLD-8511-15W	Φ130*H68	Φ105	15W	1500LM
BLD-8511-20W	Φ165*H90	Φ140	20W	2000LM
BLD-8511-30W	Φ190*H95	Φ165	30W	3000LM

Recessed downlight



BLD-7350

Voltage	110-265V
Color Temperature (K)	3000K/4000K/6000K
CRI	80
Beam angle	120°
Fixture Material	Aluminum+Acrylic
Fixture Color/Finish	White/Black
IP code	20
Average Lifetime	30000-Hours
Installation Mode	Recessed Mounting
Customizable Certificate	CE/SAA/UL
Warranty	5 Year Limited (residential), 1 Year Limited (commercial)



BLD-501MS

Voltage	110-265V
Color Temperature (K)	3000K/4000K/6000K
CRI	90
Beam angle	120°
Fixture Material	Aluminum+Acrylic
Fixture Color/Finish	White/Black
IP code	20
Average Lifetime	30000-Hours
Installation Mode	Recessed Mounting
Customizable Certificate	CE/SAA/UL
Warranty	5 Year Limited (residential), 1 Year Limited (commercial)

Model	Size(mm)	Cut Out(mm)	Power	Luminous Flux
BLD-7350-7W	Φ115*H45	Φ95	7W	700LM
BLD-7350-9W	Φ135*H50	Φ115	9W	900LM
BLD-7350-15W	Φ170*H55	Φ140	15W	1500LM
BLD-7350-18W	Φ190*H65	Φ165	18W	1800LM
BLD-7350-24W	Φ225*H70	Φ200	24W	2400LM

Model	Size(mm)	Cut Out(mm)	Power	Luminous Flux
BLD-501MS-5W	L92*W92*H46	L80*W80	5W	500LM
BLD-501MS-7W	L120*W120*H58	L100*W100	7W	700LM
BLD-501MS-12W	L140*W140*H76	L120*W120	12W	1200LM

Recessed Spotlight



BLD-501-2MS

Voltage	110-265V
Color Temperature (K)	3000K/4000K/6000K
CRI	90
Beam angle	120°
Fixture Material	Aluminum+Acrylic
Fixture Color/Finish	White/Black
IP code	20
Average Lifetime	30000-Hours
Installation Mode	Recessed Mounting
Customizable Certificate	CE/SAA/UL
Warranty	5 Year Limited (residential), 1 Year Limited (commercial)

Model	Size(mm)	Cut Out(mm)	Power	Luminous Flux
BLD-501-2MS-5W	L175*W92*H46	L160*W80	5W*2	1000LM
BLD-501-2MS-7W	L230*W120*H58	L200*W100	7W*2	1400LM
BLD-501-2MS-12W	L270*W140*H76	L240*W120	12W*2	2400LM





SURFACE MOUNTED DOWNLIGHT AND SPOTLIGHT

Surface Mounted Downlight And Spotlight



AD-M302

Voltage	110-265V
Color Temperature (K)	3000K/4000K/6000K
CRI	80
Beam angle	24°
Fixture Material	Aluminum+Acrylic
Fixture Color/Finish	White
IP code	20
Average Lifetime	20000-Hours
Installation Mode	Surface Mounting
Customizable Certificate	CE/SAA/UL
Warranty	3 Year Limited (residential), 1 Year Limited (commercial)

Model	Size(mm)	Power	Luminous Flux
AD-M302-S7W	D85*H70	7W	560LM
AD-M302-L7W	D100*H70	7W	560LM
AD-M302-12W	D120*H80	12W	960LM
AD-M302-20W	D153*H90	20W	1600LM
AD-M302-25W	D170*H100	25W	2000LM
AD-M302-30W	D210*H120	30W	2400LM



AD-M302MS

Voltage	110-265V
Color Temperature (K)	3000K/4000K/6000K
CRI	80
Beam angle	120°
Fixture Material	Aluminum+Acrylic
Fixture Color/Finish	White
IP code	20
Average Lifetime	20000-Hours
Installation Mode	Surface Mounting
Customizable Certificate	CE/SAA/UL
Warranty	3 Year Limited (residential), 1 Year Limited (commercial)

Model	Size(mm)	Power	Luminous Flux
AD-M302MS-S7W	D85*H70	7W	560LM
AD-M302MS-L7W	D100*H70	7W	560LM
AD-M302MS-12W	D120*H80	12W	960LM
AD-M302MS-20W	D153*H90	20W	1600LM
AD-M302MS-25W	D170*H100	25W	2000LM
AD-M302MS-30W	D210*H120	30W	2400LM

Surface Mounted Downlight And Spotlight



AD-CS501

Voltage	110-265V
Color Temperature (K)	3000K/4000K/6000K
CRI	80
Beam angle	24°
Fixture Material	Aluminum+Acrylic
Fixture Color/Finish	White
IP code	20
Average Lifetime	20000-Hours
Installation Mode	Surface Mounting
Customizable Certificate	CE/SAA/UL
Warranty	3 Year Limited (residential), 1 Year Limited (commercial)

Model	Size(mm)	Power	Luminous Flux
AD-CS501-7W	D55*H100	7W	560LM
AD-CS501-12W	D75*H130	12W	960LM
AD-CS501-20W	D95*H140	20W	1600LM
AD-CS501-25W	D115*H160	25W	2000LM
AD-CS501-30W	D140*H170	30W	2400LM
AD-CS501-40W	D170*H180	40W	3200LM



BLD-304

Voltage	110-265V
Color Temperature (K)	3000K/4000K/6000K
CRI	90
Beam angle	24°
Fixture Material	Aluminum+Acrylic
Fixture Color/Finish	White/Black
IP code	20
Average Lifetime	30000-Hours
Installation Mode	Surface Mounting
Customizable Certificate	CE/SAA/UL
Warranty	5 Year Limited (residential), 1 Year Limited (commercial)

Model	Size(mm)	Power	Luminous Flux
BLD-304-7W	D115*H55	7W	700LM
BLD-304-12W	D115*H55	12W	1200LM
BLD-304-20W	D133*H65	20W	2000LM

Surface Mounted Downlight And Spotlight



BLD-304MS

Voltage	110-265V
Color Temperature (K)	3000K/4000K/6000K
CRI	80
Beam angle	24°
Fixture Material	Aluminum+Acrylic
Fixture Color/Finish	White
IP code	20
Average Lifetime	30000-Hours
Installation Mode	Surface Mounting
Customizable Certificate	CE/SAA/UL
Warranty	5 Year Limited (residential), 1 Year Limited (commercial)

Model	Size(mm)	Power	Luminous Flux
BLD-304MS-7W	D115*H55	7W	700LM
BLD-304MS-12W	D115*H55	12W	1200LM
BLD-304MS-20W	D133*H65	20W	2000LM



BLD-301

Voltage	110-265V
Color Temperature (K)	3000K/4000K/6000K
CRI	90
Beam angle	24°
Fixture Material	Aluminum+Acrylic
Fixture Color/Finish	White/Black
IP code	20
Average Lifetime	30000-Hours
Installation Mode	Surface Mounting
Customizable Certificate	CE/SAA/UL
Warranty	5 Year Limited (residential), 1 Year Limited (commercial)

Model	Size(mm)	Power	Luminous Flux
BLD-301-7W	D80*H85	7W	700LM
BLD-301-12W	D80*H85	12W	1200LM
BLD-301-20W	D120*H100	20W	2000LM
BLD-301-30W	D150*H120	30W	3000LM

Surface Mounted Downlight And Spotlight



BLD-8911

Voltage	110-265V
Color Temperature (K)	3000K/4000K/6000K
CRI	90
Beam angle	24°
Fixture Material	Aluminum+Acrylic
Fixture Color/Finish	White/Black
IP code	20
Average Lifetime	30000-Hours
Installation Mode	Surface Mounting
Customizable Certificate	CE/SAA/UL
Warranty	5 Year Limited (residential), 1 Year Limited (commercial)



BLD-8911MS

Voltage	110-265V
Color Temperature (K)	3000K/4000K/6000K
CRI	90
Beam angle	120°
Fixture Material	Aluminum+Acrylic
Fixture Color/Finish	White/Black
IP code	20
Average Lifetime	30000-Hours
Installation Mode	Surface Mounting
Customizable Certificate	CE/SAA/UL
Warranty	5 Year Limited (residential), 1 Year Limited (commercial)

Model	Size(mm)	Power	Luminous Flux
BLD-8911-7W	D90*H90	7W	700LM
BLD-8911-12W	D90*H90	12W	1200LM
BLD-8911-20W	D130*H152	20W	2000LM
BLD-8911-30W	D170*H185	30W	3000LM

Model	Size(mm)	Power	Luminous Flux
BLD-8911MS-7W	D90*H90	7W	700LM
BLD-8911MS-12W	D90*H90	12W	1200LM
BLD-8911MS-20W	D130*H152	20W	2000LM
BLD-8911MS-30W	D170*H185	30W	3000LM

Surface Mounted Downlight And Spotlight



BLD-302

Voltage	110-265V
Color Temperature (K)	3000K/4000K/6000K
CRI	90
Beam angle	24°
Fixture Material	Aluminum+Acrylic
Fixture Color/Finish	White/Black
IP code	20
Average Lifetime	30000-Hours
Installation Mode	Surface Mounting
Customizable Certificate	CE/SAA/UL
Warranty	5 Year Limited (residential), 1 Year Limited (commercial)



BLD-302-2

Voltage	110-265V
Color Temperature (K)	3000K/4000K/6000K
CRI	90
Beam angle	24°
Fixture Material	Aluminum+Acrylic
Fixture Color/Finish	White/Black
IP code	20
Average Lifetime	30000-Hours
Installation Mode	Surface Mounting
Customizable Certificate	CE/SAA/UL
Warranty	5 Year Limited (residential), 1 Year Limited (commercial)

Model	Size(mm)	Power	Luminous Flux
BLD-302-7W	D100*W100*H100	7W	700LM
BLD-302-12W	D115*W115*H140	12W	1200LM
BLD-302-20W	D130*W130*H160	20W	2000LM

Model	Size(mm)	Power	Luminous Flux
BLD-302-2-7W	D200*W100*H100	7W*2	1400LM
BLD-302-2-12W	D200*W115*H140	12W*2	2400LM
BLD-302-2-20W	D260*W130*H160	20W*2	4000LM

Surface Mounted Downlight And Spotlight



BLD-302MS

Voltage	110-265V
Color Temperature (K)	3000K/4000K/6000K
CRI	90
Beam angle	120°
Fixture Material	Aluminum+Acrylic
Fixture Color/Finish	White/Black
IP code	20
Average Lifetime	30000-Hours
Installation Mode	Surface Mounting
Customizable Certificate	CE/SAA/UL
Warranty	5 Year Limited (residential), 1 Year Limited (commercial)



BLD-302MS-2

Voltage	110-265V
Color Temperature (K)	3000K/4000K/6000K
CRI	90
Beam angle	120°
Fixture Material	Aluminum+Acrylic
Fixture Color/Finish	White/Black
IP code	20
Average Lifetime	30000-Hours
Installation Mode	Surface Mounting
Customizable Certificate	CE/SAA/UL
Warranty	5 Year Limited (residential), 1 Year Limited (commercial)

Model	Size(mm)	Power	Luminous Flux
BLD-302MS-7W	D100*W100*H100	7W	700LM
BLD-302MS-12W	D115*W115*H140	12W	1200LM
BLD-302MS-20W	D130*W130*H160	20W	2000LM

Model	Size(mm)	Power	Luminous Flux
BLD-302MS-2-7W	D200*W100*H100	7W*2	1400LM
BLD-302MS-2-12W	D200*W115*H140	12W*2	2400LM
BLD-302MS-2-20W	D260*W130*H160	20W*2	4000LM

Surface Mounted Downlight And Spotlight



BLD-81021

Voltage	110-265V
Color Temperature (K)	3000K/4000K/6000K
CRI	90
Beam angle	24°
Fixture Material	Aluminum+Acrylic
Fixture Color/Finish	White/Black
IP code	20
Average Lifetime	30000-Hours
Installation Mode	Surface Mounting
Customizable Certificate	CE/SAA/UL
Warranty	5 Year Limited (residential), 1 Year Limited (commercial)



BLD-81021-2

Voltage	110-265V
Color Temperature (K)	3000K/4000K/6000K
CRI	90
Beam angle	24°
Fixture Material	Aluminum+Acrylic
Fixture Color/Finish	White/Black
IP code	20
Average Lifetime	30000-Hours
Installation Mode	Surface Mounting
Customizable Certificate	CE/SAA/UL
Warranty	5 Year Limited (residential), 1 Year Limited (commercial)

Model	Size(mm)	Power	Luminous Flux
BLD-81021-7W	D76*W76*H96	7W	700LM
BLD-81021-12W	D76*W76*H96	12W	1200LM

Model	Size(mm)	Power	Luminous Flux
BLD-81021-2-7W	D147*W76*H96	7W*2	1400LM
BLD-81021-2-12W	D147*W76*H96	12W*2	2400LM

Surface Mounted Downlight And Spotlight



BLD-81200A-10W

Size(mm)	D85*H85
Voltage	110-265V
Power	10W
Color Temperature (K)	3000K/4000K/6000K
Luminous flux	1000LM
CRI	90
Beam angle	24°
Fixture Material	Aluminum+Acrylic
Fixture Color/Finish	White/Black
IP code	20
Average Lifetime	30000-Hours
Installation Mode	Surface Mounting
Customizable Certificate	CE/SAA/UL
Warranty	5 Year Limited (residential), 1 Year Limited (commercial)



BLD-8052-7W

Size(mm)	D40*H95
Voltage	110-265V
Power	7W
Color Temperature (K)	3000K/4000K/6000K
Luminous flux	700LM
CRI	90
Beam angle	24°
Fixture Material	Aluminum+Acrylic
Fixture Color/Finish	White/Black
IP code	20
Average Lifetime	30000-Hours
Installation Mode	Surface Mounting
Customizable Certificate	CE/SAA/UL
Warranty	5 Year Limited (residential), 1 Year Limited (commercial)

Surface Mounted Downlight And Spotlight



BLD-8961

Voltage	110-265V
Color Temperature (K)	3000K/4000K/6000K
CRI	90
Beam angle	24°
Fixture Material	Aluminum+Acrylic
Fixture Color/Finish	White/Black
IP code	20
Average Lifetime	30000-Hours
Installation Mode	Surface Mounting
Customizable Certificate	CE/SAA/UL
Warranty	5 Year Limited (residential), 1 Year Limited (commercial)

Model	Size(mm)	Power	Luminous Flux
BLD-8961-7W	D70*H100	7W	700LM
BLD-8961-12W	D90*H100	12W	1200LM
BLD-8961-20W	D110*H115	20W	2000LM
BLD-8961-30W	D110*H115	30W	3000LM



BLD-8961

Voltage	110-265V
Color Temperature (K)	3000K/4000K/6000K
CRI	90
Beam angle	24°
Fixture Material	Aluminum+Acrylic
Fixture Color/Finish	White/Black
IP code	54
Average Lifetime	30000-Hours
Installation Mode	Surface Mounting
Customizable Certificate	CE/SAA/UL
Warranty	5 Year Limited (residential), 1 Year Limited (commercial)

Model	Size(mm)	Power	Luminous Flux
BLD-8961-7W	D75*H100	7W	700LM
BLD-81081-12W	D75*H100	12W	1200LM
BLD-81081-20W	D95*H152	20W	2000LM
BLD-81081-30W	D115*H152	30W	3000LM

Surface Mounted Downlight And Spotlight



BLD-8993-9W

Size(mm)	D100*H105
Voltage	110-265V
Power	9W
Color Temperature (K)	3000K/4000K/6000K
Luminous flux	900LM
CRI	90
Beam angle	24°
Fixture Material	Aluminum+Acrylic
Fixture Color/Finish	White/Black
IP code	20
Average Lifetime	30000-Hours
Installation Mode	Surface Mounting
Customizable Certificate	CE/SAA/UL
Warranty	5 Year Limited (residential), 1 Year Limited (commercial)



BLD-8971-10W

Size(mm)	D60*W60*H85
Voltage	110-265V
Power	10W
Color Temperature (K)	3000K/4000K/6000K
Luminous flux	1000LM
CRI	90
Beam angle	24°
Fixture Material	Aluminum+Acrylic
Fixture Color/Finish	White/Black
IP code	20
Average Lifetime	30000-Hours
Installation Mode	Surface Mounting
Customizable Certificate	CE/SAA/UL
Warranty	5 Year Limited (residential), 1 Year Limited (commercial)

Surface Mounted Downlight And Spotlight



BLD-81231

Voltage	110-265V
Color Temperature (K)	3000K/4000K/6000K
CRI	90
Beam angle	24°
Fixture Material	Aluminum+Acrylic
Fixture Color/Finish	White/Black
IP code	20
Average Lifetime	30000-Hours
Installation Mode	Surface Mounting
Customizable Certificate	CE/SAA/UL
Warranty	5 Year Limited (residential), 1 Year Limited (commercial)

Model	Size(mm)	Power	Luminous Flux
BLD-81231-12W	D60*H160	12W	1200LM
BLD-81231-20W	80*H198	20W	2000LM





TRACK LIGHT

Track Light



AD-DB0701

Voltage	110-265V
Color Temperature (K)	3000K/4000K/6000K
CRI	80
Beam angle	24°
Fixture Material	Aluminum+Acrylic
Fixture Color/Finish	Black
IP code	20
Average Lifetime	20000-Hours
Installation Mode	Track
Customizable Certificate	CE/SAA/UL
Warranty	3 Year Limited (residential), 1 Year Limited (commercial)



BLD-3991

Voltage	110-265V
Color Temperature (K)	3000K/4000K/6000K
CRI	90
Beam angle	24°
Fixture Material	Aluminum+Acrylic
Fixture Color/Finish	White/Black
IP code	20
Average Lifetime	30000-Hours
Installation Mode	Track
Customizable Certificate	CE/SAA/UL
Warranty	5 Year Limited (residential), 1 Year Limited (commercial)

Model	Size(mm)	Power	Luminous Flux
AD-DB0701-7W	Φ50*L120*H166	7W	560LM
AD-DB0701-12W	Φ50*L120*H166	12W	960LM
AD-DB0701-20W	Φ60*L140*H166	20W	1600LM
AD-DB0701-30W	Φ70*L160*H170	30W	2400LM
AD-DB0701-35W	Φ80*L170*H170	35W	2800LM

Model	Size(mm)	Power	Luminous Flux
BLD-3991-7W	D50*H120	7W	700LM
BLD-3991-12W	D50*H120	12W	1200LM
BLD-3991-20W	D70*H145	20W	2000LM
BLD-3991-30W	D80*H150	30W	2400LM

Track Light



BLD-3931

Voltage	110-265V
Color Temperature (K)	3000K/4000K/6000K
CRI	90
Beam angle	24°
Fixture Material	Aluminum+Acrylic
Fixture Color/Finish	White/Black
IP code	20
Average Lifetime	30000-Hours
Installation Mode	Track
Customizable Certificate	CE/SAA/UL
Warranty	5 Year Limited (residential), 1 Year Limited (commercial)

Model	Size(mm)	Power	Luminous Flux
BLD-3931-7W	D50*H130	7W	700LM
BLD-3931-12W	D65*H160	12W	1200LM
BLD-3931-20W	D75*H185	20W	2000LM



BLD-3101

Voltage	110-265V
Color Temperature (K)	3000K/4000K/6000K
CRI	90
Beam angle	24°
Fixture Material	Aluminum+Acrylic
Fixture Color/Finish	White/Black
IP code	20
Average Lifetime	30000-Hours
Installation Mode	Track
Customizable Certificate	CE/SAA/UL
Warranty	5 Year Limited (residential), 1 Year Limited (commercial)

Model	Size(mm)	Power	Luminous Flux
BLD-3101-7W	D58*H100	7W	700LM
BLD-3101-12W	D58*H100	12W	1200LM
BLD-3101-20W	D73*H135	20W	2000LM
BLD-3101-30W	D79*H158	30W	3000LM

Track Light



BLD-Track

Voltage	110-265V
Fixture Material	Aluminum
Fixture Color/Finish	White/Black
IP code	20
Installation Mode	Surface Mounting
Warranty	5 Year Limited (residential), 1 Year Limited (commercial)

Model	Size(mm)
BLD-Track-1M	L1000*D39*H15
BLD-Track-1.5M	L1500*D39*H15
BLD-Track-2M	L2000*D39*H15



BLD-180°Track connector

Size(mm)	L78*W42*H17
Voltage	110-265V
Fixture Material	Aluminum
Fixture Color/Finish	White/Black
IP code	20
Installation Mode	Surface Mounting
Warranty	5 Year Limited (residential), 1 Year Limited (commercial)



BLD-90°Track connector

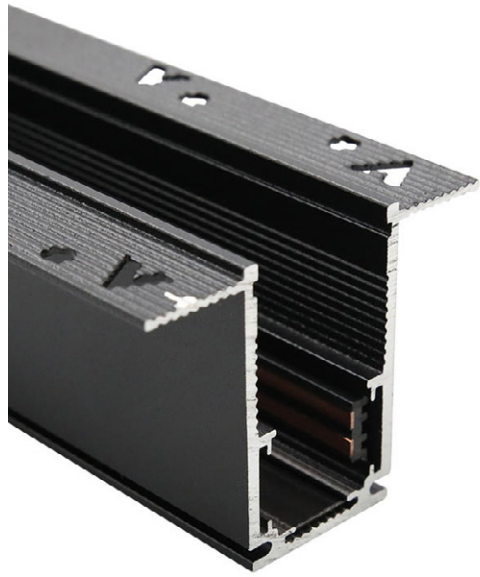
Size(mm)	L77*W77*H20
Voltage	110-265V
Fixture Material	Aluminum
Fixture Color/Finish	White/Black
IP code	20
Installation Mode	Surface Mounting
Warranty	5 Year Limited (residential), 1 Year Limited (commercial)



MAGNETIC LAMP-HOUSE

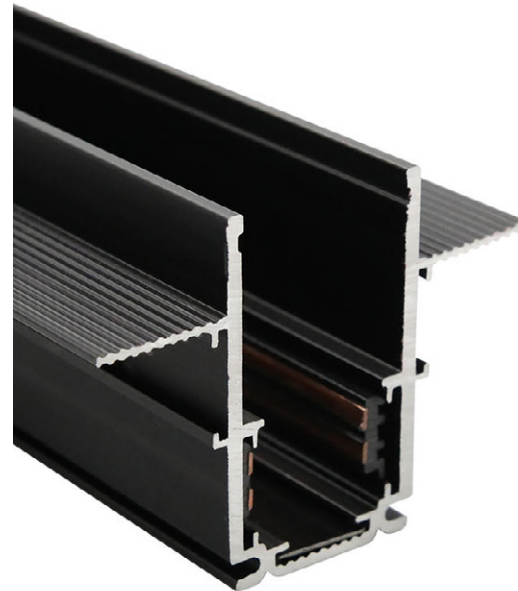
Magnetic Lamp-House

BLD-PM-Track



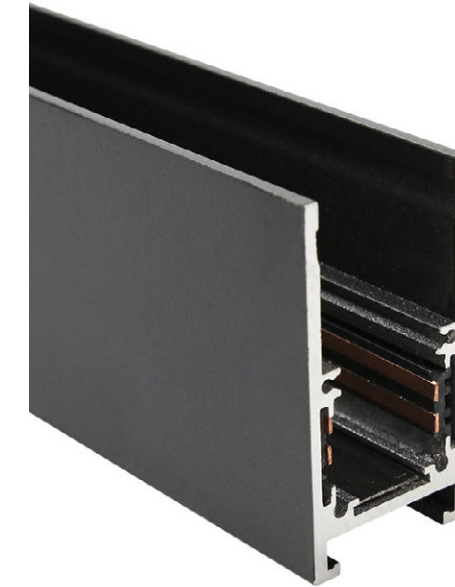
Model	Size(mm)	Cut Out(mm)
BLD-PM-Track-100	L1000*W62*H46	L1000*W30*H35
BLD-PM-Track-200	L2000*W62*H46	L2000*W30*H35
BLD-PM-Track-300	L3000*W62*H46	L3000*W30*H35
Voltage	48V	
Fixture Material	Aluminum	
Fixture Color/Finish	White/Black	
IP code	20	
Installation Mode	Embedded Mounting	
Warranty	5 Year Limited (residential), 1 Year Limited (commercial)	

BLD-YM-Track



Model	Size(mm)	Cut Out(mm)
BLD-YM-Track-100	L1000*W62*H46	L1000*W30*H35
BLD-YM-Track-200	L2000*W62*H46	L2000*W30*H35
BLD-YM-Track-300	L3000*W62*H46	L3000*W30*H35
Voltage	48V	
Fixture Material	Aluminum	
Fixture Color/Finish	Black	
IP code	20	
Installation Mode	Embedded Mounting	
Warranty	5 Year Limited (residential), 1 Year Limited (commercial)	

BLD-MZ-Track



Model	Size(mm)
BLD-MZ-Track-100	L1000*W26*H52
BLD-MZ-Track-200	L2000*W26*H52
BLD-MZ-Track-300	L3000*W26*H52
Voltage	48V
Fixture Material	Aluminum
Fixture Color/Finish	Black
IP code	20
Installation Mode	Surface Mounting
Warranty	5 Year Limited (residential), 1 Year Limited (commercial)

Magnetic Lamp-House



BLD-JF11-Track connector

Size(mm)	L93*W10*H18
Fixture Material	Plastic+Copper
Fixture Color/Finish	White/Black
IP code	20
Warranty	5 Year Limited (residential), 1 Year Limited (commercial)



BLD-JF12-Track connector

Size(mm)	L205*W10*H18
Fixture Material	Plastic+Copper
Fixture Color/Finish	White/Black
IP code	20
Warranty	5 Year Limited (residential), 1 Year Limited (commercial)



BLD-JF13-Track connector

Size(mm)	L320*W10*H18
Fixture Material	Plastic+Copper
Fixture Color/Finish	White/Black
IP code	20
Warranty	5 Year Limited (residential), 1 Year Limited (commercial)



NH-Track connector-3

Size(mm)	L80*W80*H46
Fixture Material	Aluminium
Fixture Color/Finish	White/Black
IP code	20
Warranty	5 Year Limited (residential), 1 Year Limited (commercial)



BLD-YM-Track-90°corner

Size(mm)	L80*W80*H46
Fixture Material	Aluminium
Fixture Color/Finish	White/Black
IP code	20
Warranty	5 Year Limited (residential), 1 Year Limited (commercial)



BLD-MZ-Track-90°corner

Size(mm)	L80*W80*H52
Fixture Material	Aluminium
Fixture Color/Finish	White/Black
IP code	20
Warranty	5 Year Limited (residential), 1 Year Limited (commercial)

Magnetic Lamp-House



BLD-Transformer-100W

Size(mm)	L220*W22*H45
Voltage	180-265V
Power	100W
Fixture Material	Aluminium
Fixture Color/Finish	White/Black
IP code	20
Average Lifetime	30000-Hours
Installation Mode	Surface Mounting
Warranty	5 Year Limited (residential), 1 Year Limited (commercial)

BLD-Transformer-200W

Size(mm)	L300*W22*H45
Voltage	180-265V
Power	200W
Fixture Material	Aluminium
Fixture Color/Finish	White/Black
IP code	20
Average Lifetime	30000-Hours
Installation Mode	Surface Mounting
Warranty	5 Year Limited (residential), 1 Year Limited (commercial)



BLD-MW-Transformer

Voltage	100-240V
Fixture Material	Aluminium
Fixture Color/Finish	Silver
IP code	20
Average Lifetime	30000-Hours
Customizable Certificate	CE/SAA/UL
Warranty	5 Year Limited (residential), 1 Year Limited (commercial)

Model	Size(mm)	Power
BLD-MW-Transformer-100W	L130*W100*H30	100W
BLD-MW-Transformer-150W	L160*W100*H30	150W
BLD-MW-Transformer-200W	L215*W115*H30	200W
BLD-MW-Transformer-350W	L215*W115*H30	350W

Magnetic Lamp-House



BLD-FG

Voltage	48V
Color Temperature (K)	3000K/4000K/6000K
CRI	90
Beam angle	120°
Fixture Material	Aluminum+Acrylic
Fixture Color/Finish	White/Black
IP code	20
Average Lifetime	30000-Hours
Installation Mode	Track
Customizable Certificate	\
Warranty	5 Year Limited (residential), 1 Year Limited (commercial)

Model	Size(mm)	Power	Luminous Flux
BLD-FG300	D307*W23*H25	10W	1000LM
BLD-FG600	D607*W23*H25	20W	2000LM
BLD-FG900	D900*W23*H25	30W	3000LM



BLD-ZDFG

Voltage	48V
Color Temperature (K)	3000K/4000K/6000K
CRI	90
Beam angle	120°
Fixture Material	Aluminum+Acrylic
Fixture Color/Finish	White/Black
IP code	20
Average Lifetime	30000-Hours
Installation Mode	Track
Customizable Certificate	\
Warranty	5 Year Limited (residential), 1 Year Limited (commercial)

Model	Size(mm)	Power	Luminous Flux
BLD-ZDFG300	D307*W23*H82	10W	1000LM
BLD-ZDFG600	D607*W23*H82	20W	2000LM

Magnetic Lamp-House



BLD-GS

Voltage	48V
Color Temperature (K)	3000K/4000K/6000K
CRI	90
Beam angle	24°
Fixture Material	Aluminum+Acrylic
Fixture Color/Finish	White/Black
IP code	20
Average Lifetime	30000-Hours
Installation Mode	Track
Customizable Certificate	\
Warranty	5 Year Limited (residential), 1 Year Limited (commercial)

Model	Size(mm)	Power	Luminous Flux
BLD-GS6	D115*W23*H25	6W	600LM
BLD-GS12	D223*W23*H25	12W	1200LM
BLD-GS18	D330*W23*H25	18W	1800LM
BLD-GS24	D436*W23*H25	24W	2400LM



BLD-ZDGS

Voltage	48V
Color Temperature (K)	3000K/4000K/6000K
CRI	90
Beam angle	24°
Fixture Material	Aluminum+Acrylic
Fixture Color/Finish	White/Black
IP code	20
Average Lifetime	30000-Hours
Installation Mode	Track
Customizable Certificate	\
Warranty	5 Year Limited (residential), 1 Year Limited (commercial)

Model	Size(mm)	Power	Luminous Flux
BLD-ZDGS6	D110*W23*H82	6W	600LM
BLD-ZDGS12	D220*W23*H82	12W	1200LM
BLD-ZDGS18	D330*W23*H82	18W	1800LM
BLD-ZDGS24	D440*W23*H82	24W	2400LM

Magnetic Lamp-House



BLD-MCD

Voltage	48V
Color Temperature (K)	3000K/4000K/6000K
CRI	90
Beam angle	24°
Fixture Material	Aluminum+Acrylic
Fixture Color/Finish	White/Black
IP code	20
Average Lifetime	30000-Hours
Installation Mode	Track
Customizable Certificate	\
Warranty	5 Year Limited (residential), 1 Year Limited (commercial)



BLD-MCDZX60

Size(mm)	D60*H300
Voltage	48V
Power	10W
Color Temperature (K)	3000K/4000K/6000K
Luminous flux	1000LM
CRI	90
Beam angle	24°
Fixture Material	Aluminum+Acrylic
Fixture Color/Finish	White/Black
IP code	20
Average Lifetime	30000-Hours
Installation Mode	Track
Customizable Certificate	\
Warranty	5 Year Limited (residential), 1 Year Limited (commercial)

Model	Size(mm)	Power	Luminous Flux
BLD-MCD42	D35*H80	7W	700LM
BLD-MCD48	D45*H100	12W	1200LM
BLD-MCD58	D55*H120	20W	2000LM
BLD-MCD68	D65*H140	30W	3000LM